

# What is Friendship House

Friendship House is a centre for community life, education and social services set in the heart of Manukau. We provide a safe place where individuals, families and whanau can find a welcome and, if needed, find assistance to meet life's challenges.

As a community resource and place for change, our work is dedicated to empowering and encouraging people to take charge of their own lives within the context of their own culture, values and aspirations.

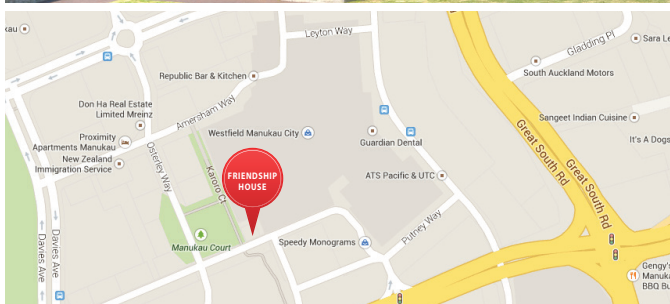
## At Friendship House we are committed to:

- ✓ Meeting individual, family and community needs
- ✓ Challenging injustice
- ✓ Creating a healthy, peaceful community
- ✓ Ensuring everyone has access to the services they need

At a free initial appointment we will discuss with you the cost of any on-going services you require. Any service charges will be based on our affordable sliding scale and your personal circumstances.



*"You could feel the warmth as soon as you walked in the door – just the ambience of the place made you feel automatically welcome"*



**Friendship House**  
*He Whare Tangata*

20 Putney Way  
P.O. Box 76-140  
Manukau City Centre  
Auckland, 2241

Phone: 09-262-2322

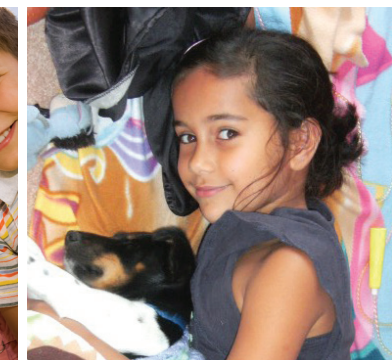
E-mail: [info@friendshiphouse.org.nz](mailto:info@friendshiphouse.org.nz)

Community Centre is open:

Monday to Friday 8.30am to 4.30pm

Some evenings and weekends by arrangement,  
for courses and groups

*A place for people  
in the heart of Manukau*  
[www.friendshiphouse.org.nz](http://www.friendshiphouse.org.nz)



*A place for people in the heart of Manukau*  
[www.friendshiphouse.org.nz](http://www.friendshiphouse.org.nz)





# Community Centre

## Lounge & Café

Friendship House provides a friendly, homely atmosphere where you can relax and rest, meet friends and enjoy quality, affordable food. We are a local information centre and can provide you with general information, practical assistance and referral to local agencies, and government departments.

You are welcome to use all our facilities including:



Café



Free phone



Children's corner



Wi-Fi access



Baby changing facility

*"The smell of home cooking made you feel like you were home"*



*"I will definitely be back here again, an ideal place for young mums to come to!"*

# Community Centre



*"We love Friendship House. Our room booking was so stress free. We found you helpful with equipment and it's a friendly space"*

## Room Hire

A variety of rooms are available for hire to community, church, business groups and individuals on a casual or regular basis. We offer:

- ✓ Central Manukau Location
- ✓ Rooms to suit groups 2-30
- ✓ Interactive data projectors in two rooms
- ✓ Affordable charges which will vary dependent on your organisation's circumstances
- ✓ 1st Floor kitchen with tea / coffee making facility
- ✓ Community Centre Café with in-house catering service on request (ground floor)

For more detailed information and photos of rooms go to [www.friendshiphouse.org.nz](http://www.friendshiphouse.org.nz)

# Support Services

Our goal is to empower people to build satisfying relationships and purposeful lives. Our staff are qualified, supervised professionals who will work together with you to create a plan to suit your unique situation.

**We deliver a range of coordinated services:**

- ✓ Individual & Family Support
- ✓ Social Work & Counselling
- ✓ Family Violence Programmes
- ✓ Professional Supervision & Development
- ✓ Employee Assistance Counselling
- ✓ Community Development



**Fresh possibilities...  
Positive change...  
Personal growth...**

*We work in ways that are client centred, holistic, family and solution focussed.*

**At Friendship House you have the right to:**

- ✓ Be treated fairly and with dignity
- ✓ Have confidential and professional assistance
- ✓ Honesty and openness in our relationship with you
- ✓ Have your individual, family and cultural differences respected.